

[Interview with users and designers]



Transform Spaces and Feelings with Floor Coverings

- Aiyoh Sangyo Co.Ltd.



Aiyoh Sangyo Co.,Ltd. is a manufacturer that primarily deals with industrial rubber, plastic, and urethane products. In July of 2023, their new sales headquarters building was completed in Nagoya City, Aichi Prefecture, and in the building, many of TAJIMA's products are used for flooring materials. We interviewed Mr. Kishi, the CEO of Aiyoh Sangyo, as well as Mr. Suzuki and Mr. Niwa of Katou Design, the company responsible for the design, regarding the features and design concept of the new sales headquarters building.

Thanks to ...

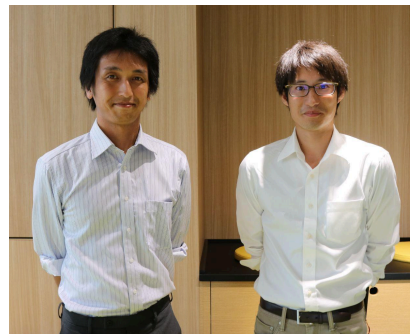
AIYOH SANGYO CO.LTD.

CEO Mr. Yasushi Kishi



KATOU SEKKEI CO.,LTD.

Mr. Kenji Suzuki Mr. Ryosuke Niwa



From the left Mr. Kishi, Mr. Suzuki and Mr. Niwa

Working spaces for the next 30 years.

As a proposal-oriented company dedicated to the corporate concept of 'Ideas to reality!', Aiyoh Sangyo is striving to create an environment that accommodates a wide range of activities. Consequently, a comprehensive office survey was conducted for all employees about the new sales headquarters building to identify and address potential issues. Proposals and adjustments were implemented even during the construction/installation phase, aiming to meet employees' needs for an inspiring office space and to ensure the company building's resilience to disasters.

The overall spatial design of the office is anchored in the concept of a 'white-walled office with sunlight filtering through the trees surrounded by greenery,' ensuring that greenery is visible from every room. Moreover, simple concepts and direction are established for each room to cultivate a motivating environment for employees and encourage spontaneous communication.



TAPIS GRACIA 4040-7302, TAPIS ARTELE 4020-7103

Changing floor materials can transform the ambiance of spaces.

TAPIS CRAFT CHECK is used on the 4th floor. The floor pattern changes from the elevator hall and main conference room, featuring an elegant beige check pattern, to a more casual orange check pattern in the ABW(※) space. This intentional design aims to create a space where individuals from both inside and outside the company can gather and communicate.

Based on the concept of harmonizing the space from a meeting place to a casual workspace, the floor patterns are designed so that both areas complement each other when the mobile partitions are opened and closed. When we communicated our wish to create a casual atmosphere to TAJIMA, the representative suggested carpet tiles with a light checkered pattern. Besides being a new product, when we saw the pattern, it gave us the impression of a high-end European brand, which played a decisive role in our proposal to the client. We believe that this design has successfully achieved a natural transition from the conference room to the ABW space, adding a casual touch and contributing to an overall neat impression of the entire space.

※Activity Based Working (ABW) is a flexible work approach that enables employees to choose their work location based on the content of their tasks and feelings.



TAPIS CRAFT CHECK TZ09-661



TAPIS CRAFT CHECK TZ09-666

Design to shift the mindset of people working there.

The 5th and 6th office floors are designed with the aim of improving productivity. The design incorporates a gate-like structure in the elevator hall, intending not only for staff to walk through it to access another space but also to transition their mindset to a work-oriented state. Considering the specific work content of each department, the flooring on the 5th floor is designed to enhance concentration, while the 6th floor promotes a sense of dynamism. We were concerned that installing fixtures might dilute the intended concept, but as a result, we are pleased to note that the initial concept is realized as expected, as the space seamlessly extends from the elevator hall.

Simple concepts are also set for each meeting room, such as 'Idea Meeting' and 'Decision Meeting.' The Idea Meeting room is designed to inspire a relaxed atmosphere surrounded by nature. Seats are arranged in a staircase-like configuration, encouraging unusual and interesting discussions. The movable and storable seats allow for flexibility, transforming the room into a regular conference room by adding tables as needed.

The green carpet, seemingly inspired by the essence of nature, was proposed with a design that ensures comfort for the staff when sitting on it. The beautiful color of the carpet tiles leaves a lasting impression, and we believe it makes this space appealing and inviting to use.



TAPIS PRCIOUS STONE 497-6501,6502,6512,
TAIS DELIE 4050-7403,7404



TAPIS PRCIOUS STONE 497-6501,6502,6510,6511,6517



TAPIS LUCIR 4010-7009

— **Could you share your typical considerations and preferences in space design? Additionally, what factors do you prioritize when choosing flooring materials?**

We always emphasize cultivating an uplifting atmosphere and creating designs that never become ordinary. Recently, there has been a focus on health and individual preferences in the office section, with proposals like 'well-being' and 'engagement.' We strive to create spaces that are not only comfortable but also contribute to psychological safety. When presenting designs to our clients, we frequently utilize in-house-produced simple perspectives. So, we often select flooring materials that maintain an appealing appearance even in such small and simple perspectives.

— **Could you share with us your future aims or aspirations in the field of space design?**

We are receiving an increasing number of requests to transform office environments. Our aim is to establish lively and dynamic office spaces that stimulate creativity and encourage individuals to generate diverse ideas.



TAJIMA's mid- to high-end carpet tile series "TZ "

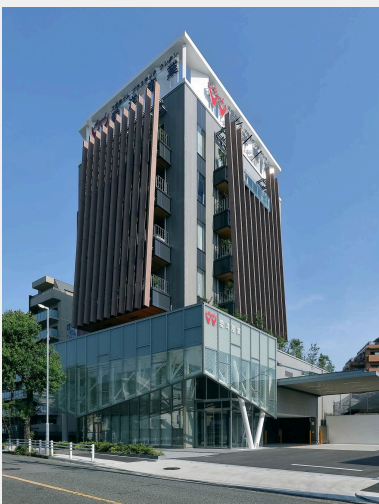
The carpet tiles used by Aiyoh Sangyo are all products from the 'TZ' brand, a mid- to high-end series of carpet tiles by TAJIMA, with the letter 'Z' signifying the highest quality. In recent years, the office environment has undergone significant changes due to various influences, including reforms in work styles. The TZ series is versatile and can contribute to various office environments, including telecommuting and remote work in co-working spaces.

[Click here for TZ Series Digital Catalog](#)

AIYOH SANGYO CO.LTD.

3-28-21 Shirakabe, Higashi-ku, Nagoya City

<http://www.aiyo.co.jp/>



Tajima's sales person's comment

It was about two years ago when KATOUEI contacted us regarding the AIYOH SANGYO new sales headquarters building project. The focal point was not only the flooring design but also how the floor would complement the other interior elements, such as wallpaper and ceiling. During the project, we discovered that the flooring material stood out more than we had imagined when combined with the wallpaper. In my opinion, TAPIS CRAFT CHECK was particularly impressive in this context. The wallpaper manufacturer's salesperson also praised the design of TAPIS CRAFT CHECK. Through this project, I was able to personally reaffirm the quality of TAJIMA's products.

Through the repeated meeting, the unique space design was materialized, and we could feel the personality of Mr. Kishi, the CEO, who prioritizes people working there. As a result we regard this opportunity as a precious experience for us. We are grateful that our flooring materials were chosen for this wonderful, novel office building.

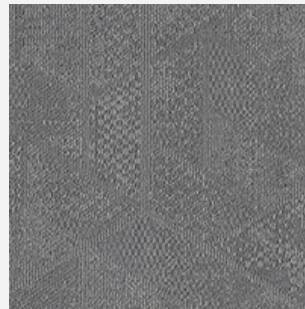
Yachiyo Inoue

Tajima Roofing Inc. Floor Material Department, Sales Division

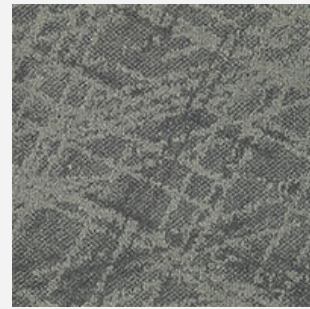
Floor materials introduced in this article.



Carpet Tile
TAPIS CRAFT CHECK
TZ09-661, TZ09-666



Carpet Tile
TAPIS PRECIOUS STONE
497-6501, 497-6502, 497-6510,
497-6511, 497-6512, 497-6517



Carpet Tile
TAPIS DELIE
4050-7403, 4050-7404



Carpet Tile
TAPIS LUCIR
4010-7009



Carpet Tile
TAPIS GRACIA
4040-7302



Carpet Tile
TAPIS ARTELE
4020-7103