

**For turning R&D Facilities into more creative spaces:
PLANUS INC. (Registered architects firm with first-class license)**

We, Tajima, have launched floor sheets "ANTI-CHEMICAL VINYL SHEET LAB" and "ANTI-CHEMICAL VINYL SHEET LAB PLUS" in 2022. Typically, functional aspects are prioritized for such types of floors. However, the development concept behind these products aimed not only to enhance functionality but also to 'improve the working environment' through thoughtful design and variety.

We have received valuable insights and advice on product development from PLANUS INC., a registered architectural firm with a first-class license. This time, we interviewed their architects about the future of R&D facilities in Japan and the flooring used in these facilities.

Thanks to ...

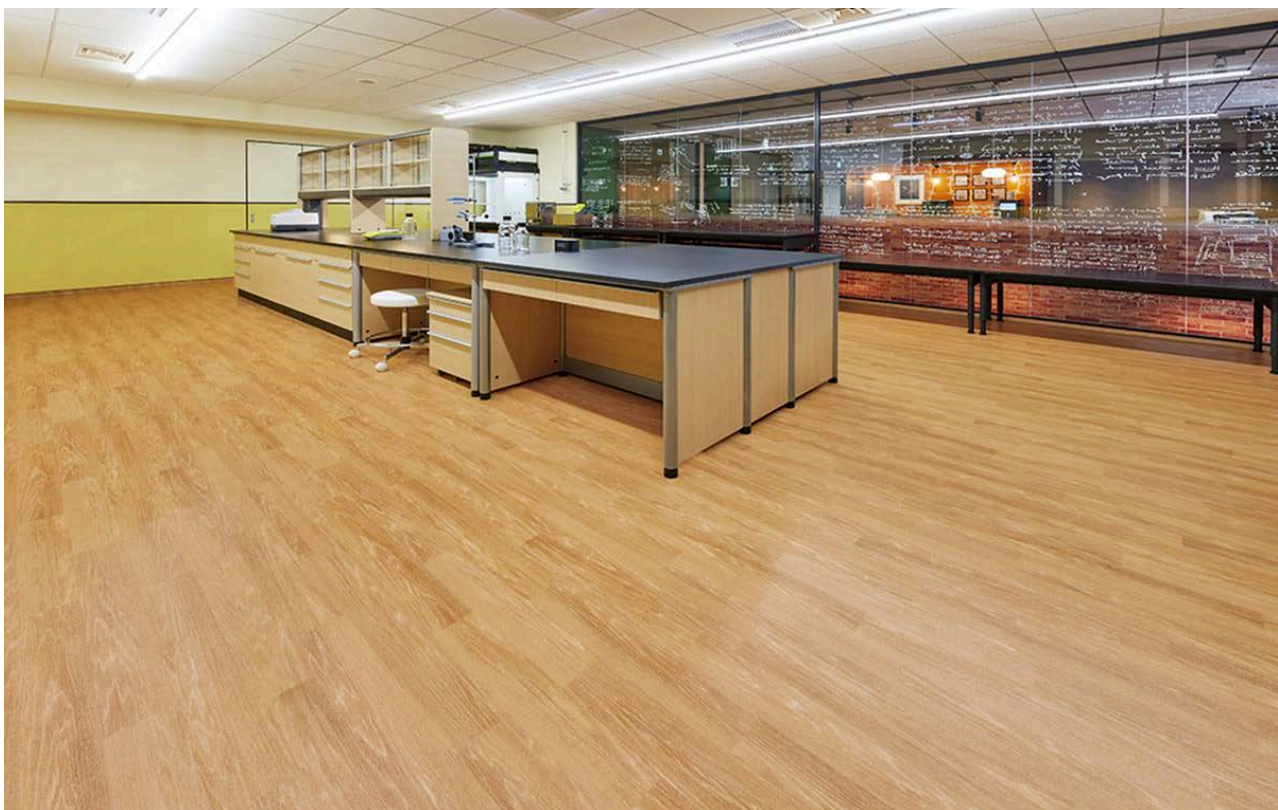
PLANUS Inc.

Executive officer/Chief creative director

Mr. Kazumasa Fukuda

PLANUS Inc.

Mr. Eisuke Kurihara



Rental lab space on the 5th floor where ANTI-CHEMICAL VINYL SHEET LAB PLUS TP-8320G is installed.

Laboratories should be creative spaces that generate inspiration.

We have been waiting for a floor that meets this demand.

Mr. Fukuda :

Looking at R&D facilities overseas, there are many interesting and exciting ones where innovation is likely to be generated. These are spaces for 'people' to conduct research activities. Talented researchers from all over the world gather and work in such places.

On the other hand, conventional research facilities in Japan have yet to create such spaces. For example, when it comes to flooring materials, functionality is the top priority, similar to production facilities such as factories. How people feel in these spaces has been of secondary importance, with no clear emphasis on color or pattern. Floor sheets for such spaces had limited color variations or were too glossy. It is tiring and uninteresting to conduct research in such environments. It is difficult to come up with new ideas in such settings, isn't it?

We believe that R&D facilities should be considered "places where people creatively conduct research activities." They should not be indifferent spaces that make you want to leave as soon as possible. Instead, they should be places that make you want to be there, where you can refresh your mind and find inspiration even when facing difficulties.

It was said that Japan used to lead the world in innovative manufacturing, such as the creation of the 'WALKMAN.' We believe that the creation of attractive spaces for research facilities has lagged behind the global trend, which may result in Japan falling behind the edge of the world in the field of new product manufacturing that never existed before.



PLANUS Inc. Mr. Kazumasa Fukuda (At 10F DISCOVERY LOUNGE)

PLANUS Inc., with registered first-class licensed architects, is a highly specialized architectural firm in the design of R&D facilities. Considering "contributing to clients' 'discovery' and 'innovation' through design" as their mission, the firm has designed many Japanese research facilities and innovation centers to be creative spaces of world-class standards.

Mr. Fukuda :

In the design of R&D facilities, flooring design is usually limited to different color layouts, and we thought there were no other options beyond that. We discussed the need for a wood grain pattern to make researchers want to stay for longer periods of time, and now Tajima has introduced the new ANTI-CHEMICAL VINYL SHEET LAB PLUS. We now have flooring material options for research facilities, including wood grain and mortar-like patterns. We believe that flooring materials for improving R&D facilities have finally begun to advance.

A seamless connection between office and laboratory areas to relieve the tense atmosphere in the laboratory.

ANTI-CHEMICAL VINYL SHEET LAB PLUS is a functional vinyl floor sheet that offers various designs such as wood grain, cloud, textile, and mortar patterns, while being equipped with chemical resistance, antibacterial properties, antistatic properties, and wax-free maintenance, all essential for R&D facilities. This product perfectly aligns with PLANUS Inc.'s vision for the future of R&D facilities. The timing of the product's launch was ideal, coinciding with the design of their new building, which includes rental laboratory functions.

Mr. Kurihara, who designed this rental laboratory floor, shares his impressions of ANTI-CHEMICAL VINYL SHEET LAB PLUS, which they were among the first to use.



PLANUS Inc. Mr. Eisuke Kurihara (At 10F DISCOVERY LOUNGE)

Mr. Fukuda:

Floors give a strong impression and influence on people. People recognize "what this place is for" by stepping on the floor. If it is a coated floor, they may think it should be a restaurant kitchen, or if it is a fluffy carpet, they may associate it with a luxurious place. That is why we believe it is important to use wood-grain patterned flooring in laboratories.

Traditionally, R&D facilities had an atmosphere that made people feel serious and nervous. However, wood-grain patterned flooring can create a psychological effect that encourages people to be more relaxed, fostering creativity and communication.

Offices and laboratories have always been located next to each other. Typically, data from experiments conducted in the laboratory are checked and summarized in the office.

However, while offices have recently become more like living spaces where people want to stay, laboratories are not yet as comfortable. Despite efforts to divide the space with beautiful glass or design the walls, there has always been a clear separation between comfortable spaces and spaces that are more fatiguing.

With this wood-grained ANTI-CHEMICAL VINYL SHEET LAB PLUS, we believe the connection between the office and laboratory has significantly advanced.

Moreover, it is nice to have a variety of shades within the wood grain pattern. The variety of colors and patterns is an advantage in meeting each client's requirements.

**Be open. Full of stimulation.
A space that generates "unexpectedness"
that can stimulate the inspiration.**

For R&D facilities, changes from various perspectives are required. While functionality remains essential, there is a growing trend towards creating more creative spaces. This trend focuses on elements that were previously overlooked, such as the researchers themselves and their environment.

We conducted further interviews regarding the current and future trends of R&D facilities.

Mr. Fukuda:

There is a growing trend toward openness in the approach of R&D facilities. This trend comes from the concept of open innovation, where joint development is conducted with external researchers. It has become increasingly challenging for a single company to create something entirely new on its own. In fact, we are receiving an increasing number of requests to create "innovation centers" where research and development can be conducted collaboratively with external parties and their technologies can be introduced to others, rather than completing all work within a single laboratory.

Mr. Kurihara:

These changes in R&D facilities include the aspect of creating a recruiting effect, making people want to conduct their research there. It's similar to how office environments can attract employees. Just as some people choose a job based on the office environment, a laboratory should be a place that makes researchers want to work there. They spend a lot of time in the lab, so making it feel like a living space can be an appealing point.

Experiments cannot be done remotely due to the chemicals used and the equipment required. From this perspective, what is needed is a suitable 'place'

Mr. Fukuda:

In R&D facilities, unexpected encounters and opportunities are essential. When research hits a standstill, being in a slightly different atmosphere can lead to new ideas, conversations with others, unexpected perspectives, or encountering interesting samples left unattended. These opportunities often provide hints for creating something new.

We believe our job is to create such an environment.

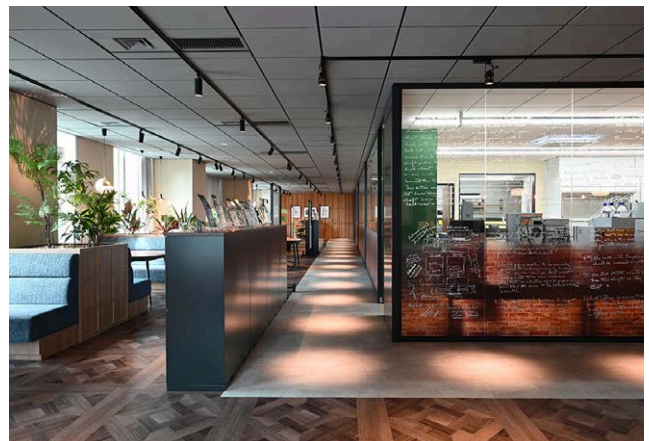
Mr. Kurihara:

The theme of our showroom, which functions as a rental laboratory, is inspired by 'Edison'. Thomas Edison, the famous inventor, was actually the first person to create a place like an innovation center.

Edison's laboratory still stands in New Jersey, USA. It includes not only a laboratory and a factory but also a music room and meeting spaces amidst a collection of various materials. It's an environment filled with opportunities for inspiration. We designed our building with the aim of recreating such a place. On the glass wall separating the meeting space from the laboratory, Edison's own handwritten notes from his notebooks are directly imprinted onto film to enhance the creative atmosphere.



Rental lab space on the 5th floor where ANTI-CHEMICAL VINYL SHEET LAB PLUS TP-8320G is installed.



A space where offices and laboratories are seamlessly connected.

Mr. Fukuda:

A company like ours is required to change stereotypes. In fact, our company building embodies a concept that can help create something new.

On the first floor, there is "600," a shop where you can buy chocolate, coffee, aromas, and lab wares, as well as X/S, a showroom. The fifth floor features a co-working space and rental labs for our partners. "DISCOVERY LOUNGE" on the tenth floor is a lounge space where visitors can feel as if they have arrived at the lobby of a resort hotel. All of these facilities are designed with the concept of generating innovation.

We don't want to be just an architectural office whose job is confined to designing buildings; we aim to be a group that explores the theme of "what we can do to help researchers produce good work." We are working together to achieve this goal.

Chocolate is one of our approaches. If you are interested, please visit our website. You will find detailed information on the secrets our CEO, Mr. Hayashi, has been exploring.

We believe that their commitment to contributing to researchers' discoveries and innovations has directly led to advancements in R&D facilities in Japan. Through this interview with PLANUS Inc., we are proud to be part of their vision by producing new floor materials that align with their aspirations for R&D facilities.

We would appreciate it if you could take a look at ANTI-CHEMICAL VINYL SHEET LAB PLUS and ANTI-CHEMICAL VINYL SHEET LAB, floor coverings that will renew the impression of research and development facilities.

PLANUS INC.

<https://planus.co.jp/>

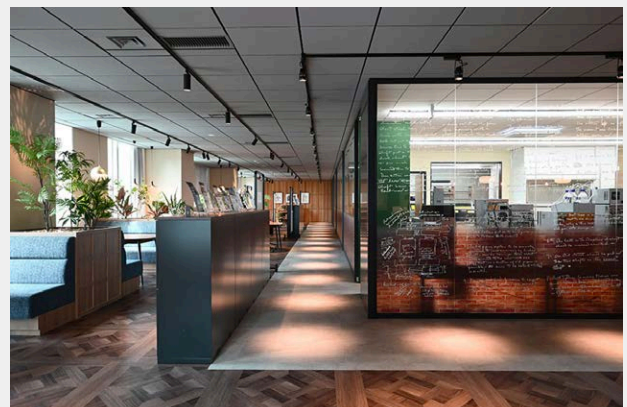
[Column from PLANUS INC. editorial department](#)

※In Japanese.

Chocolate, espresso and the Nobel Prize.

600(Six hundreds)

[On-line shop](#) [Instagram](#)



Floor material used in PLANUS INC.



Sheet Vinyl Flooring

ANTI-CHEMICAL SHEET LAB PLUS

Anti-chemical /Creative Design/Wood grain pattern

TP-8320G