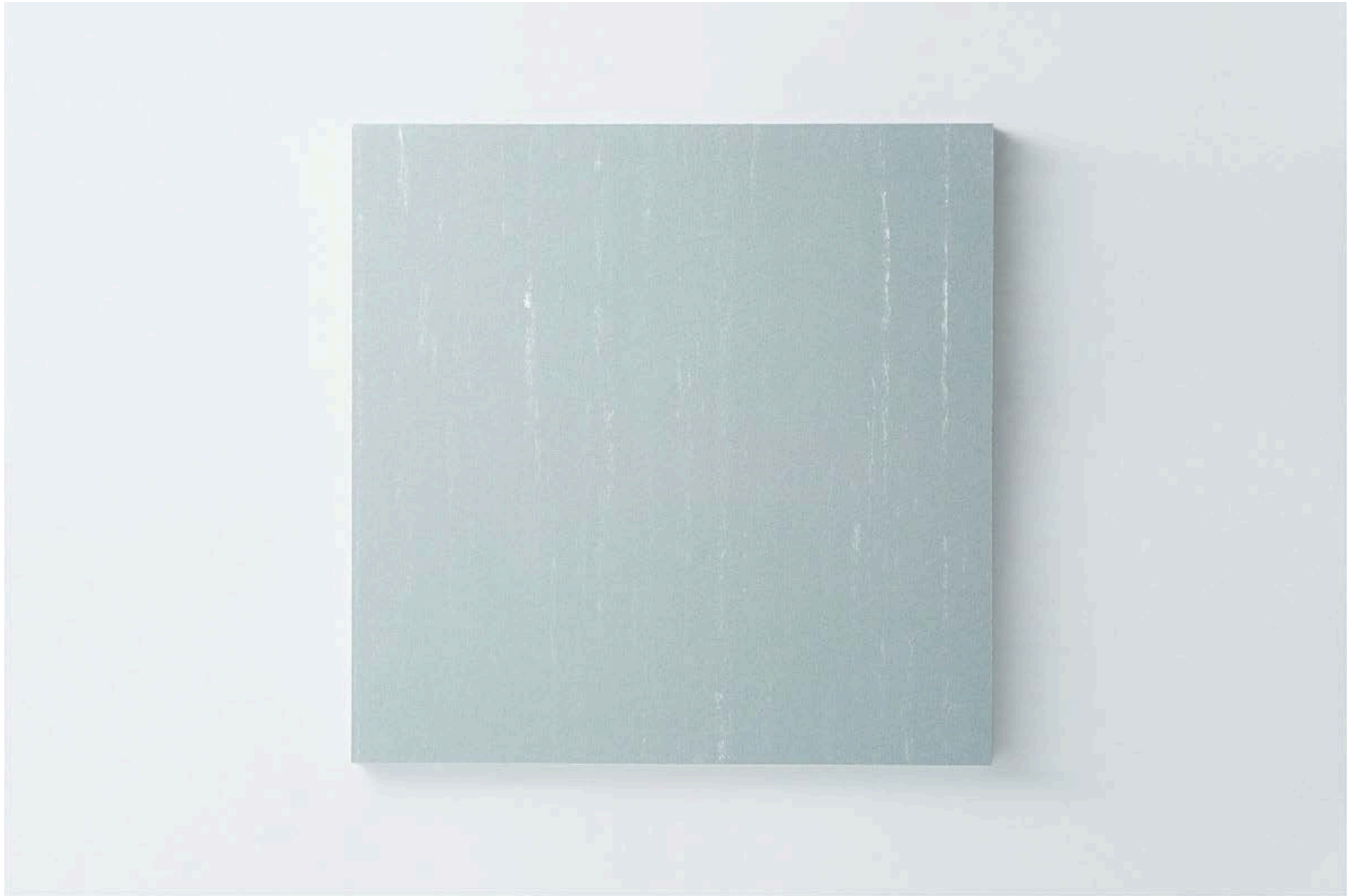


Column : What does "P-tile" means ?**[Product Development History ①P-TILE]**

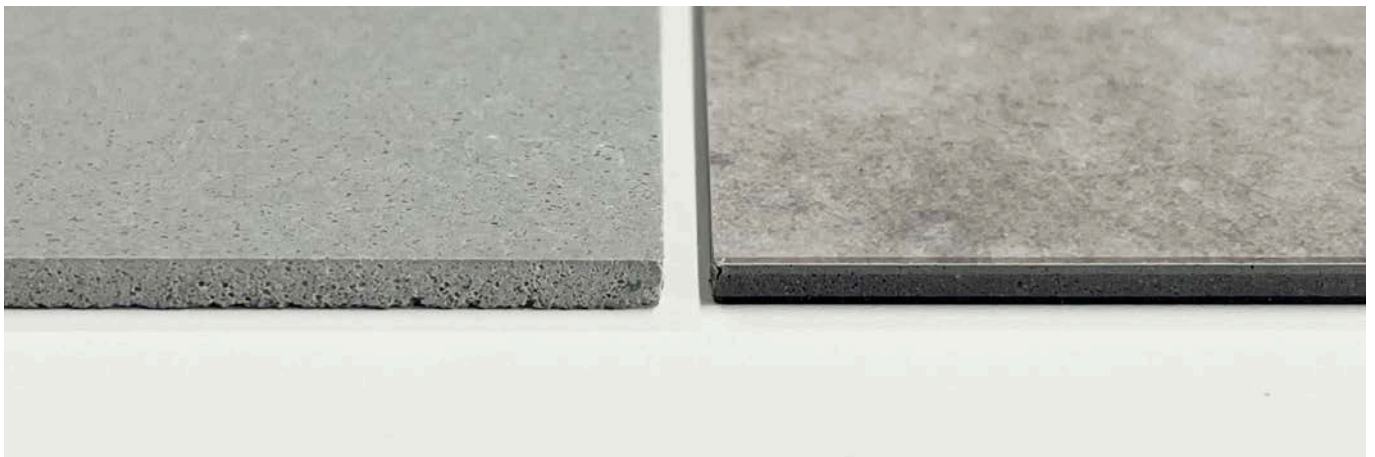
When choosing flooring materials, among various types of floors such as wood flooring, natural stone floors, and porcelain ceramic tiles,"plastic flooring" can be an important option. In Japan, plastic tiles are nowadays often referred to by users as "PVC tiles" or simply "P tile." Although these designations are similar in some respects, they actually mean different things. Here are some of the differences.

Usage of the respective names "PVC tile" and "P tile"

As the name suggests, "PVC tile" refers to tile flooring materials made from polyvinyl chloride resin, and "P tile" falls into this category. However, the term "P tile" seems to have several meanings in Japan. Broadly speaking, it is often used in the following three ways.

1. Used as a general term to refer to tiles made of polyvinyl chloride resin, in the same way as "PVC tile"
2. Used as a general term to refer to "composition tile," which is explained in detail later in this article.
3. Used to refer to a specific product name from TAJIMA.

"P-TILE" is originally the specific name of one of TAJIMA's flooring products. In the Japanese Industrial Standard (JIS) classification, it is classified as "Vinyl Composition Floor Tile KT," referring to tiles with a single-layer (homogeneous) structure made by kneading raw materials. On the other hand, "Heterogeneous Vinyl Floor Tile FT" in JIS classification refers to multi-layered tiles with a printed film layer, clear layer surface, and other layers over the base backing. The attractiveness of "Vinyl Composition Floor Tile" lies in the warm texture of the material itself, while "Heterogeneous Vinyl Floor Tile" reproduces a wide variety of color patterns, such as wood grain and stone grain, through its printed film expression. Both types are widely used in many different types of buildings.



The history of P-TILE development

1950



ASPHALT TILE

1956



PLUS TILE P
Sample book

1960~



Kasumigaseki
Building

2020~

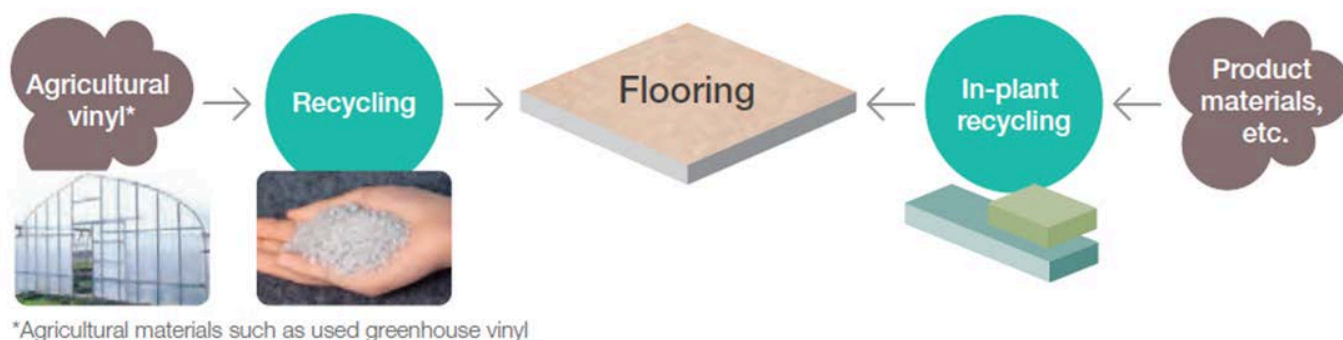


Design and user
friendliness in line
with each era's trends.

As you have seen, the term "P tile" is widely used as a generic name in the construction and DIY industries in Japan. In fact, it is actually the trade name for a plastic tile originally developed by TAJIMA in the 1950s, which is still manufactured and sold today. Here, we share a bit more of the history of "P-TILE" development.

Founded in 1919 as a manufacturer of architectural waterproofing materials, TAJIMA began developing flooring materials in 1949 at the request of the GHQ (General Headquarters of the Supreme Commander for the Allied Powers) after World War II. Asphalt tiles, developed using our asphalt technology, attracted a great deal of attention as a flooring material that could withstand a million people walking on it. Later, in 1953, following the generalization of vinyl chloride resin in Japan, we began producing plastic tiles as the first manufacturer in Japan. In 1956, we launched "PLUS TILE P," known as "P-TILE," which was a 2.0 mm thickness tile with performance equivalent to asphalt tiles. "PLUS TILE P" was widely advertised at its launch and has since become a generic term for plastic tiles. During the high-growth period of the 1960s in Japan, vinyl floor tiles became explosively popular, used in high-rise buildings, schools, and residences. A total of 1.2 million vinyl floor tiles, including "P-TILE", were installed, decorating the floors of various buildings in Japan. From then until the 2020s, the color palette has been adapted to the times while retaining its universal usability, and it continues to live on in our daily lives.

TAJIMA is one of the first to begin recycling raw materials, as a pioneer in P-TILE development.

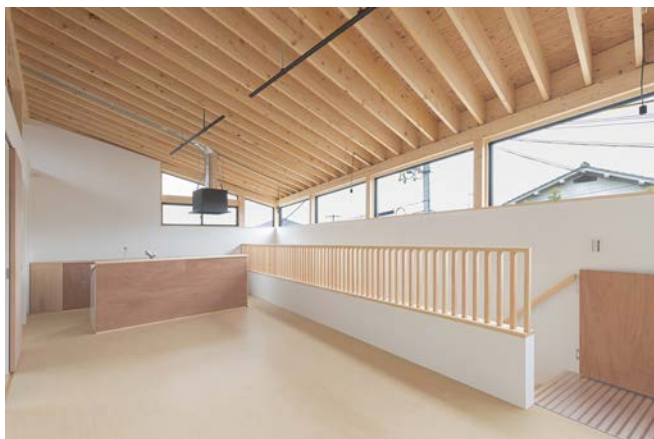


As a building materials manufacturer that consumes significant resources, we are committed to recycling raw materials in the production of plastic tiles as part of our social responsibility. We recycle scrapped materials generated in our manufacturing facilities into flooring materials, which are transferred and managed even between distant facilities, establishing a waste-free system. Additionally, vinyl films and other materials used in agriculture and horticulture are repurposed as raw materials. Since 1974, we have pioneered technologies for collecting, sorting, cleaning, crushing, and granulating these recycled materials, effectively integrating them into our production processes.

These recycling initiatives have reduced the use of new raw materials and CO₂ emissions by approximately 32%. We contribute to the realization of a recycling-oriented society by lessening the burden on the environment.

The texture of P-TILE has been highly evaluated by both users and designers.

Actual examples of TAJIMA's P-Tiles are introduced in separate articles. We interviewed users about their reasons for selecting them and their impressions of the finish. Here is a link to the article.



P TILE Modern A-25 (Photo : Ryosuke Sato)



P TILE Classic P-41

[\[Interview with designers\]](#) I like P-TILE for its distinctive texture and ease of installation, making it a flooring material I would like to continue using. - kurosawa kawara-ten

[\[Designer Interview and column\]](#) P-TILE for restore the Registered Tangible Cultural Property: "Diffendorfer Memorial Hall East Wing in International Christian University"

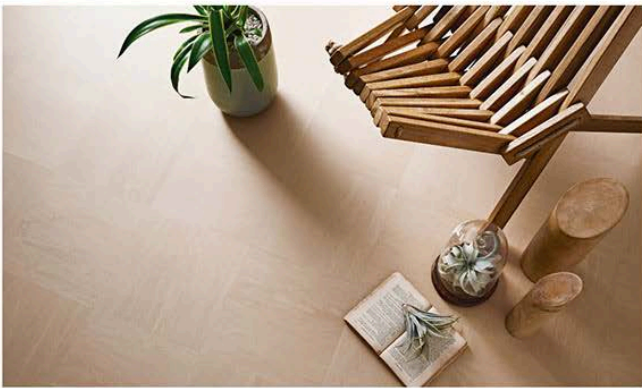
P-TILE and composition tiles have evolved into various designs.

Ptile

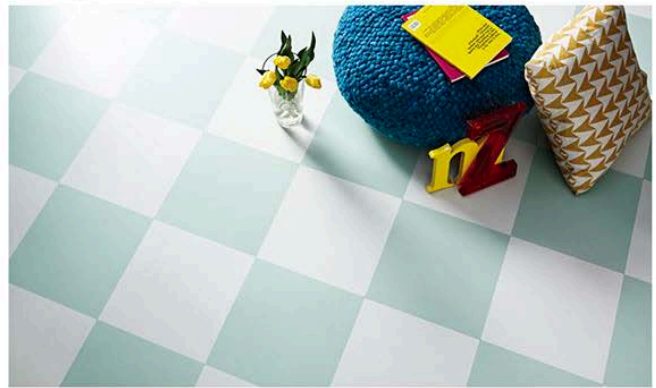
Classic



Modern

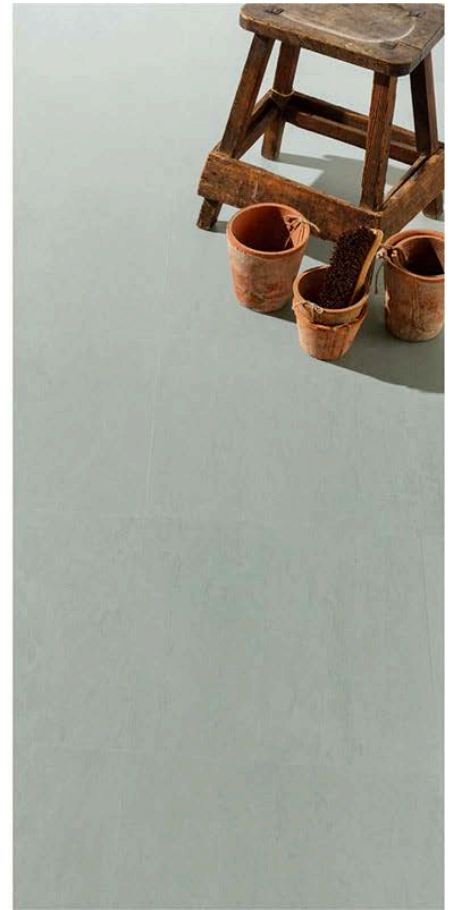
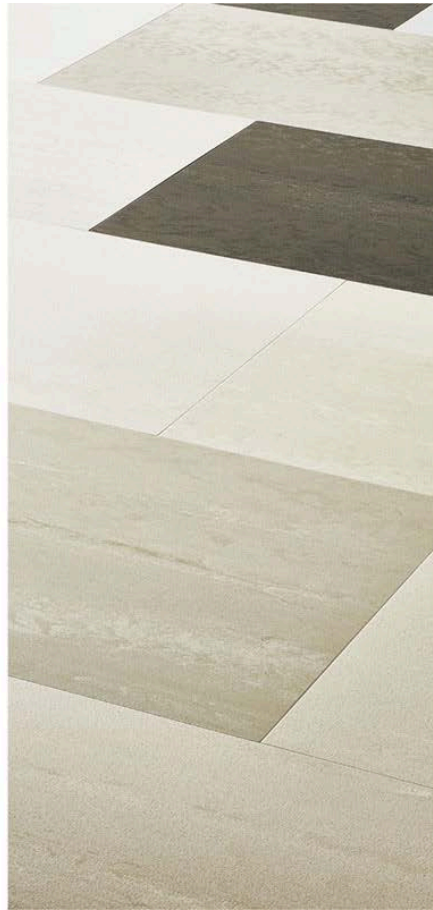
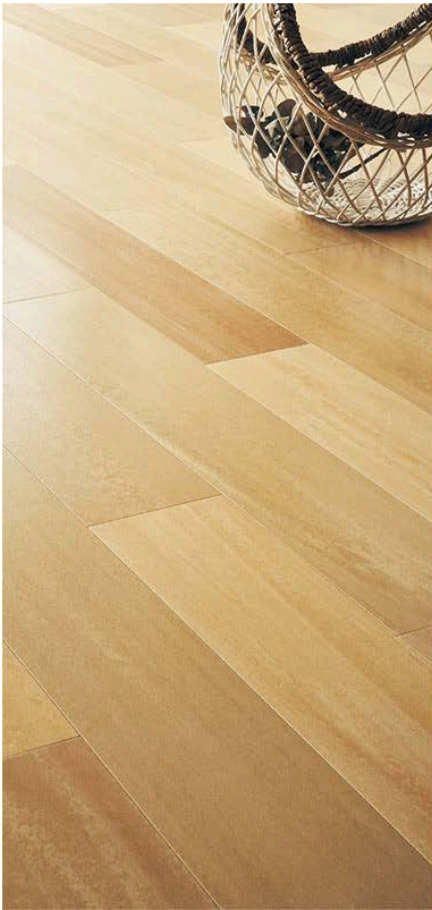


Muji



Upper right:P TILE Classic P-17 , P-32 , P-4, Bottom left:P TILE Modern A-27, Bottom right:P TILE Muji PRD-401 , PRD-475

TAJIMA's P-TILE is currently available in three variations: 'Classic', 'Modern', and 'Muji'. The 'Classic' design features a timeless mottled texture in P-TILES. The 'Modern' design offers a simple, contemporary style inspired by natural textures, while 'Muji' presents a colorful, plain design that reflects changing trends over time.



Left:WOOD CRAFT 648-807 , 648-808 , 648-810 , 648-811、 Center:TERAHNO TN-107 , TN-109 , TN-110 , TN-115 , TN-118、
Right:MORTALIKE 647-701

In the same "Vinyl Composition Floor Tile" category as P-TILE, we also offer "WOODCRAFT", which replicates the unique grain and color variations found in natural wood, "TERAHNO", featuring a cobblestone-like texture with subtle gradations, and "MORTALIKE", offering a stylish matte finish resembling mortar.

The design possibilities for composition tiles are expanding, with the addition of designs that express a variety of familiar materials as well as simple plain patterns.

The attractiveness of composition tiles lies in their distinctive material textures.



Here, we would like to share more general information about composition tiles, including P-TILE. Composition tiles are primarily made from polyvinyl chloride resin and calcium carbonate, with pigments blended meticulously through advanced craftsmanship. This process creates a warm, natural texture and rich expression, ensuring that each tile is unique.

As tiles with authentic material textures, they are highly regarded by designers and architects aiming to realize their vision in their designs and spaces. Despite this category of tile having a history of over 50 years, it has achieved a new status among plastic tiles as a value-added product with a "distinctive material texture".

The future of composition tiles



TSUCHINAGI TG-2101



In response to the growing demand for more environmentally friendly building materials, we launched the biomass composition tile "TSUCHINAGI" in 2023, which incorporates reused eggshells as part of its raw materials. By repurposing eggshells, waste from food manufacturers, we reduce the amount of waste incinerated or landfilled, thus minimizing environmental impact. Eggshells account for approximately 20% of the raw materials, and the flooring material has received the Biomass Mark from the Japan Organic Resources Association. The colors and patterns feature new 'soil'-like textures that align with the biophilic design trend.

TAJIMA's composition tiles incorporate environmentally friendly manufacturing methods while prioritizing the well-being of individuals and indoor environments. Design-wise, we aim to leverage their attractive textures to simulate a variety of familiar materials. We hope that P-TILE and our composition tiles continue to capture your attention and serve as excellent options for creating attractive spaces.



[P TILE Style Book](#)



[Composition Tile Collection](#)