

**Soft Cove Base makes it easy  
to create a beautiful joint between the floor and wall.  
[Product Development History ③ Soft Cove Base]**



When designing a space, the primary focus is often on large areas like floors, walls, ceilings, and eye-catching furniture. However, at the final stage of considering the overall design, elements like the cove base (or skirting), which is installed at the junction between the floor and the wall, should also be taken into account. Cove bases are important for covering the gap between the floor and wall, ensuring it isn't visible. They also serve to protect the wall from damage caused by shoes, casters, and other objects. Generally, there are two main types of cove bases: a soft version made of vinyl and a rigid one made of wood.

## Features & Advantages of Soft Cove Base and Wooden Cove Base

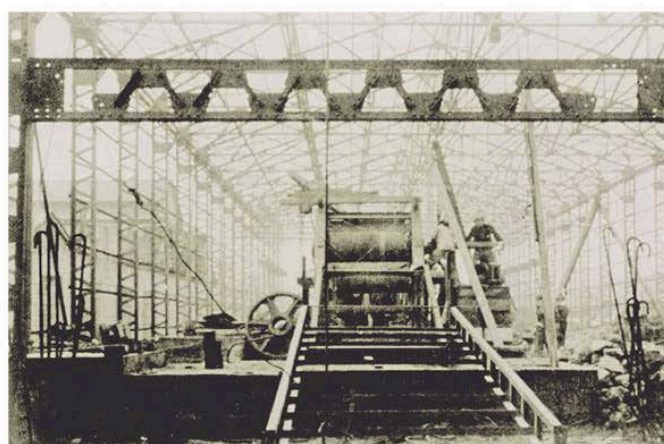
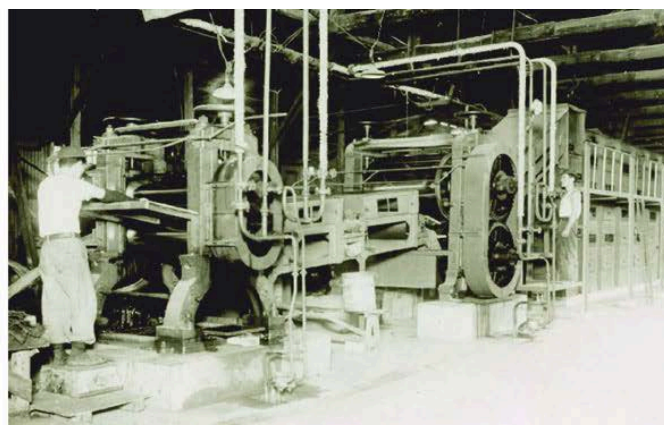


First, regarding wooden cove bases, they are typically thick and often feature decorative elements such as grooved lines. Their thickness helps protect the wallpaper, but they have some disadvantages. For instance, installation can be more challenging as they require nailing, and they tend to accumulate dust easily. Additionally, they are generally more expensive than soft cove bases.

On the other hand, soft cove bases are made of vinyl, and as the name suggests, they are thin and flexible. They are easy to cut and adhere to the wall, and can be folded to fit around corners, making installation simple. Additionally, they are relatively easy to clean and more cost-effective than wooden cove bases.

Tajima was the first to develop a soft cove base in Japan. In the 1950s, when only wooden cove bases were available, we pioneered the development and production of the vinyl "Soft Cove Base." Since then, our product name has become synonymous with soft cove bases in Japan.

## Development history of "Soft Cove Base"



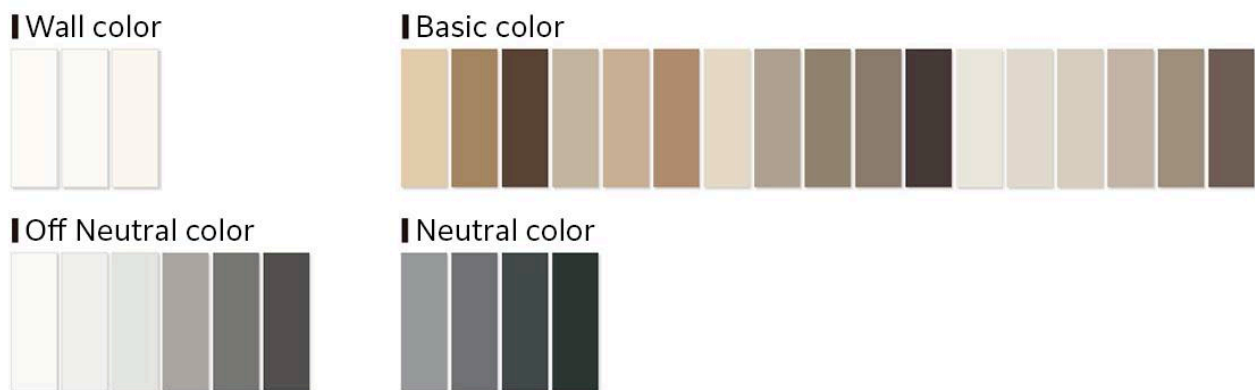
Back in 1949, TAJIMA, which had established itself as a manufacturer of waterproofing materials for construction, began developing flooring materials at the request of the GHQ (General Headquarters of the Supreme Commander for the Allied Powers) after World War II, leveraging our asphalt processing technology. The "Asphalt Tile" we developed was a big hit, described as "a flooring material that can withstand one million people walking on it." Following this, in 1954, we developed and released the "Pressed Cove Base," also made of asphalt, as a supplementary material for flooring. However, this product faced several challenges, including poor productivity and the fact that it was only one foot long, which made the joints visible and led to gaps forming between them.

In 1956, the plastic "PLUS TILE P" was introduced as the main tile product. It was widely promoted at the same time, and the common name "P-tile" became popular among the public. We also began developing a new cove base to address the issues with the "Press Cove Base." We attempted to use a similar production method and material composition as the "P-Tile," forming it into a sheet shape. Initially, the lower skirt part did not form straight, but after extensive trial and error, we discovered the optimal temperature conditions and completed the product. In 1958, the "Soft Cove Case HA" was launched. Available in six colors with product code numbers HA-1 through HA-6, it was 2.5 mm thick, 100 mm high, 914.4 mm (about 3 feet) long, and came in cases of 50 pieces.

The "Soft Cove Base HA" improved productivity compared to the "Press Cove Base," but issues such as poor surface finish, bending, and shrinkage persisted. Consequently, we switched from roll manufacturing to an extruder, and the "Soft Cove Base HB" was launched in 1959. This version was also available in six colors, with part numbers HB-1 through HB-6. The "HB-" prefix in the product code has continued in subsequent products, making it a long-standing item in our lineup. Since then, we have continuously refined our products, addressing various challenges, and "Soft Cove Base" has become synonymous with vinyl cove bases.

## Current TAJIMA Cove Base Lineup

### Antifouling · Antibacterial · Mold resistant Cove Base Soft Cove Base/Long Cove Base/Stair Skirting/Wide Cove Base



Among the various types, the Soft Cove Base is the most standard, with a length of 914.4 mm. It is available in four heights (40, 60, 75, and 100 mm) and comes in two styles: 'With Toe,' which includes a bend at the bottom, and 'Without Toe,' which does not have a bend at the bottom.

The "Long Cove Base" is a roll type with a length of 25 meters. It is available in three heights (60, 75, and 100 mm) and comes with or without a toe. The "Stair Skirting" is designed for stairs and is cut from a 1,050 mm x 330 mm sheet into two pieces, covering three steps. The "Wide Cove Base" has a height of 300 mm and is commonly used in medical and welfare facilities where wheelchair access is expected.

For these colors, we offer a wide selection including white, brown, gray, and black, which complement both flooring and wallpaper.

※There are standard stock items and build-to-order items, depending on the type and color pattern. For details, please refer to our general catalog.

## Wood Tone Cove Base/ Soft Cove Base (High Color)

### Wood Tone



### High Color



When matching to a space with wood grain is preferred, the "Wood Tone Cove Base" is a good choice. It comes in a long roll type with four height options: 60 mm, 75 mm, 100 mm, and a width of 300 mm. For those looking to create a stylish space, the "Soft Cove Base (High Color)" with an enhanced pearl texture is also available. ※The renewal of the "Wood Tone Cove Base" is scheduled for October 2024.

For those who want the cove base to look tidy in a space or wish to maintain consistency by matching it with the width of the window frame, the minimalist "Hitofude" series (meaning 'one-stroke' in Japanese calligraphy), with a height of 30 mm, is also available.

"Guard Vinyl Cove Base AC" features a foam layer designed to reduce impact on the lower part of the wall surface. It is ideal for medical and welfare facilities where frequent movement of casters is expected and wall surface protection is required. The height is 300 mm, and it is available as a roll-type product.

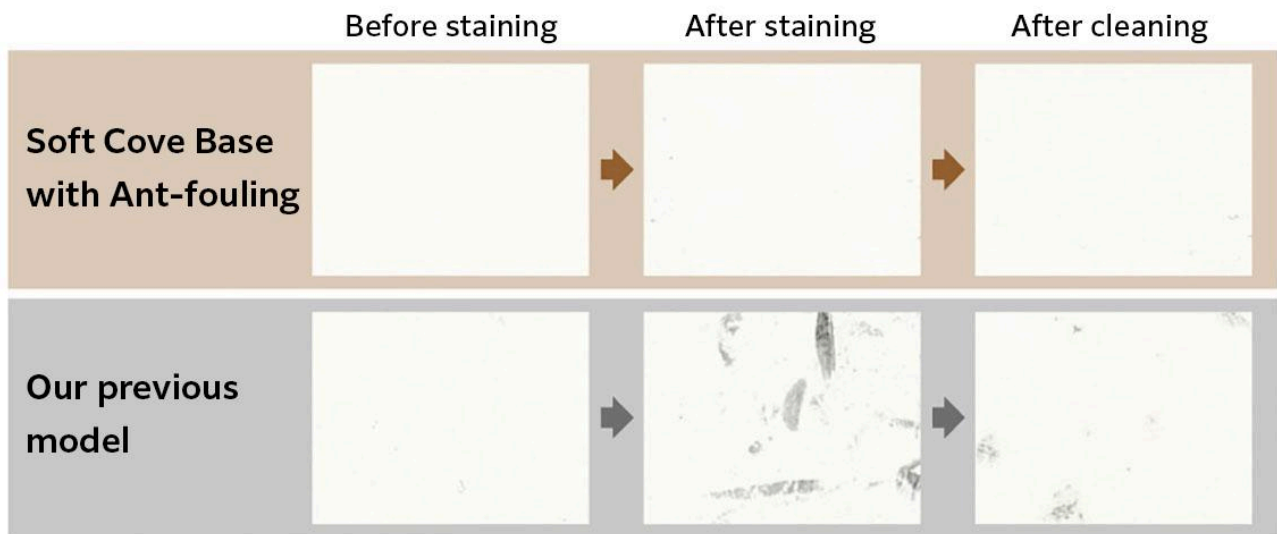
## Tajima Soft Cove Base line-up

	Toe		Height						Length		
	With	Without	30mm	40mm	60mm	75mm	100mm	300mm	914.4mm	9m	25m
Soft Cove Base	○	○	—	○	○	○	○	—	○	—	—
Long Cove Base	○	○	—	—	○	○	○	—	—	—	○
Stair Skirting	—	—	To be cut from a 330 mm x 1,050 mm sheet.								
Wide Cove Base	○	—	—	—	—	—	—	○	—	○	—
Wood Tone Cove Base	○	—	—	—	○	○	○	—	—	—	○
Wide Cove Base H300 (Wood Tone)	○	—	—	—	—	—	—	○	—	○	—
Soft Cove Base (High Color)	○	○	—	—	○	—	—	—	○	—	—
Hitofude 30mm high cove base	○	○	○	—	—	—	—	—	—	—	○
Guard Cove Base AC	—	○	—	—	—	—	—	○	—	○	—

※Please note that some products are standard stock items while others are build-to-order, depending on color, height, and other factors. For more information, please refer to our general catalog.

## Care about the stain resistance and design of the lower part of the wall.

### Stain-resistance test result



#### Test outline

Six rubber blocks (simulating soles) were placed into a drum lined with test pieces (SOFT COVE BASE) and agitated for 10 minutes. The stained pieces were then wiped with a well wrung-out cloth. Conforms to JIS K3920 test standards.

Most of Tajima's Cove Bases are equipped with anti-fouling, antibacterial, and antifungal properties, making them stain-resistant and easy to clean. These features help maintain a clean environment, including the prevention of heel marks.

※For more details on products with these properties, please refer to our general catalog.



Left: Edge Bar installation image Right : Mini Mole installation image

In addition, we offer more options for enhancing the design and stain resistance of the bottom part of walls. Our products include the "Edge Bar," a vinyl molding used when installing tiles and sheets on walls, and the "Mini Mole," a material designed to neatly finish the top edge of a sheet when it is extended up the wall.

※Please refer to our general catalog for details.

# TAJIMA supports space creation from the floor up.

TAJIMA became a pioneer in flooring materials manufacturing with the introduction of its 'P-Tile' in the 1950s and later popularized the "Soft Cove Base." We are committed to supporting the creation of better spaces by not only focusing on the floor but also considering harmony with the walls and the overall space. We hope you will consider TAJIMA's products as a top choice when selecting flooring materials and cove base.



[Digital Catalog of Tajima Cove Base Series](#)

[Product page of Antifouling/Antibacterial/Mold resistant Cove Base](#)

[Product page of Hitofude\(Antifouling/Antibacterial/30mm height Long Cove Base\)](#)